

LFCO

A1



TECHNICAL SPECIFICATIONS:

- :: With snap-on & bolt mounting options for one-person installations. Select a mounting option (Sold separately)
- :: Housing: Die-cast aluminum housing with powder coat finish (Dark Bronze)
- :: Philips Lumileds Lexeon high flux LED
- :: TIR optic lens - TYPE III
- :: Cord type: 3.2' SJTW 18/3 AWG cable
- :: Voltage: 100-277V; 60Hz AC
- :: Operating Temp: -40°F to 104°F
- :: Up to 130 lumens per watt
- :: CRI: 70
- :: Beam Angle: 120°X90°
- :: 70,000 hour rated life
- :: 7-year warranty
- :: Suitable for Wet Locations, IP65

APPLICATIONS:

- :: Ideal for general site lighting, alleys, loading docks, doorway, pathway and parking areas.
- :: Replace existing HID flood lights/ wall packs

OPTIONS
PHOTOCELL
MOTION SENSOR
BATTERY BACKUP
FIXTURE COLOR

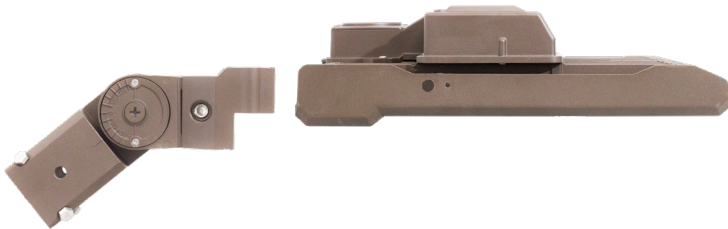


LED FLOOD LIGHT SERIES

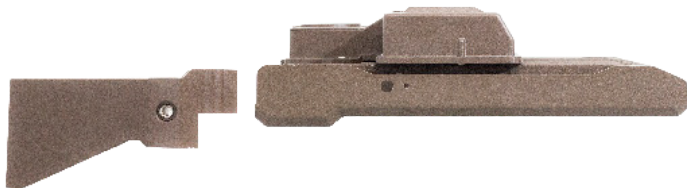
CATALOG NO.	WATTS	LUMENS	COLOR TEMP	DIMENSIONS
LFCO-50W-50K	50W	6900LM	5000K	9-1/2"(L) x 10-7/8"(W) x 3-3/8"(H)
LFCO-50W-40K	50W	6900LM	4000K	
LFCO-50W-30K	50W	6900LM	3000K	
LFCO-80W-50K	80W	10500LM	5000K	
LFCO-80W-40K	80W	10500LM	4000K	
LFCO-80W-30K	80W	10500LM	3000K	
LFCO-100W-50K	100W	13100LM	5000K	11-3/8"(L) x 11"(W) x 3-1/2"(H)
LFCO-100W-40K	100W	13100LM	4000K	
LFCO-100W-30K	100W	13100LM	3000K	
LFCO-150W-50K	150W	19500LM	5000K	13-3/8"(L) x 12-5/8"(W) x 3-3/4"(H)
LFCO-150W-40K	150W	19500LM	4000K	
LFCO-150W-30K	150W	19500LM	3000K	
LFCO-230W-50K	230W	29900LM	5000K	16-5/8"(L) x 12-5/8"(W) x 4-5/8"(H)
LFCO-230W-40K	230W	29900LM	4000K	
LFCO-230W-30K	230W	29900LM	3000K	
LFCO-300W-50K	300W	41500LM	5000K	
LFCO-300W-40K	300W	41500LM	4000K	
LFCO-300W-30K	300W	41500LM	3000K	

MOUNTING OPTIONS

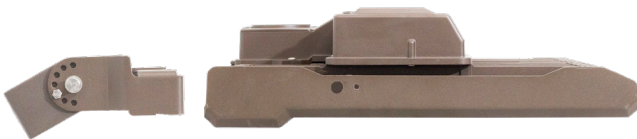
A1



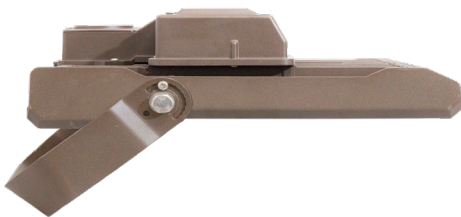
LFCO-SF
Adjustable Slip Fitter for Pole Mount
2"–2-1/2"



LFCO-SA
Straight arm for shoe box applica-
tions
Fits square & round poles
3" Wide



LFCO-YK
Adjustable Yoke



LFCO-TR
"U" Bracket